

Variations and Distorted Reflections

(after Stradella)

for solo violin

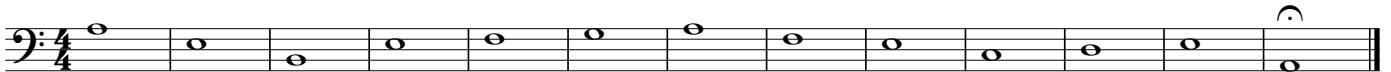
Ian Percy

Stradella Sonata 12

(Ground Bass)

Note: Variations 1-18 are in 4/4 and Variations 19-25 are in 3/4.

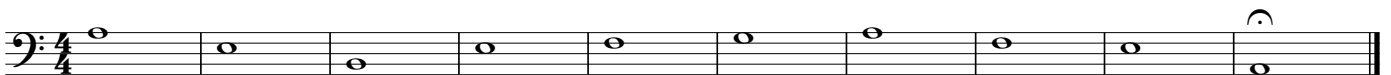
1-10 **12-16** **18** 13 bars (4/4) with 'final' double bar-line and fermata on last note (except for variation 5)



11 14 bars (4/4) with 'final' double bar-line and fermata on last note. Pitch content is not affected by extra bar...



17 10 bars (4/4) with 'final' double bar-line and fermata on last note (Unique!)



19-21 **23** 13 bars (3/4) with 'final' double bar-line and fermata on last note



22, 24-25 14 bars (3/4) with 'final' double bar-line and fermata on last note. Pitch content is not affected by the extra bar...



Variation 10 is perhaps the crescendo of the first section (semi-quavers throughout)?

Intensity builds from Variation 16-18...

Variation 17 is unique: Only 10 bars long (semi-quavers throughout)!

Variations 17 & 18 are the crescendo of the middle section (18 uses semi-quavers and demi-semi-quavers).

Variation 19 is first 3/4 bar and marks a drop in intensity (almost a reset with the change in time).

Variations 10, 14, 17 & 22 all use semi-quavers throughout...