

**Dr Ian Percy**  
**Twelve-tone Analysis**

Worksheet Three

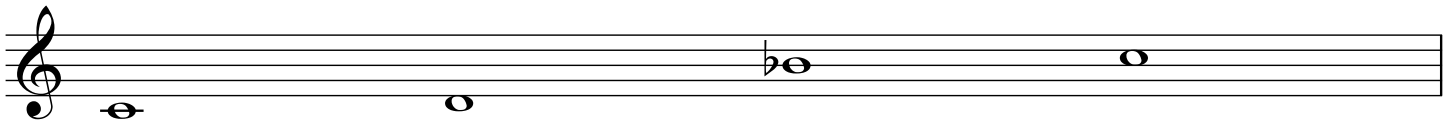
**Pitch-Classes, Interval-Classes and Pitch-Class Sets**

**Question:**

1. Write out each example in pitch-classes (numbers 0-11) to identify the **PC Set**:
2. Identify and list the PC Set in **Normal Order**: Shortest span between outer notes
3. If required transpose the PC Set into **Prime Order**: Normal Order transposed to 0
4. Use Solomon Webpage or PCSetCalc App to identify the PC Set (Forte) number:
5. List the **Interval Vector** for each example:
6. List all of the interval-classes (class 1-6) found in each example:
7. List all of the interval-types (interval-name) found in each example:
8. Use Solomon Webpage to help identify any alternate names for the PC Set:

Note: Each example results in a three-note (three number) pitch-class set.

[a]



**Answer:**

- |                     |                           |
|---------------------|---------------------------|
| 1. PC Set:          | 2. Normal Order:          |
| 3. Prime Order:     | 4. PC Set (Forte) Number: |
| 5. Vector:          | 6. Interval-Classes:      |
| 7. Interval-Types:  |                           |
| 8. Alternate Names: |                           |

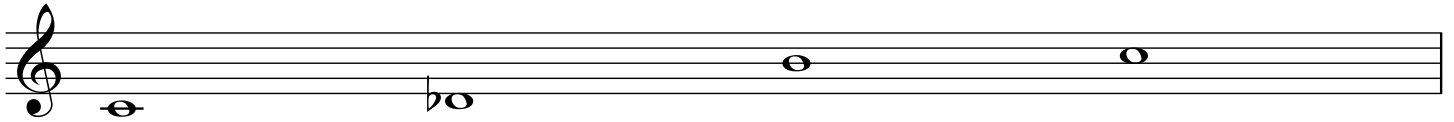
[b]



**Answer:**

- |                     |                           |
|---------------------|---------------------------|
| 1. PC Set:          | 2. Normal Order:          |
| 3. Prime Order:     | 4. PC Set (Forte) Number: |
| 5. Vector:          | 6. Interval-Classes:      |
| 7. Interval-Types:  |                           |
| 8. Alternate Names: |                           |

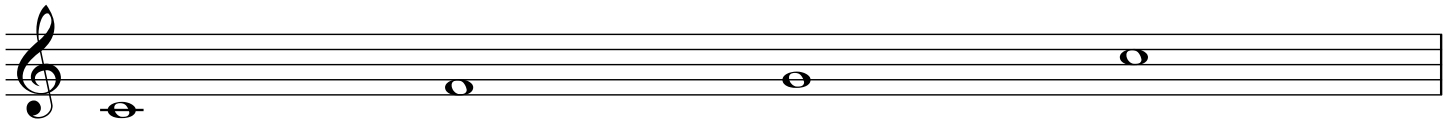
[c]



**Answer:**

- |                     |                           |
|---------------------|---------------------------|
| 1. PC Set:          | 2. Normal Order:          |
| 3. Prime Order:     | 4. PC Set (Forte) Number: |
| 5. Vector:          | 6. Interval-Classes:      |
| 7. Interval-Types:  |                           |
| 8. Alternate Names: |                           |

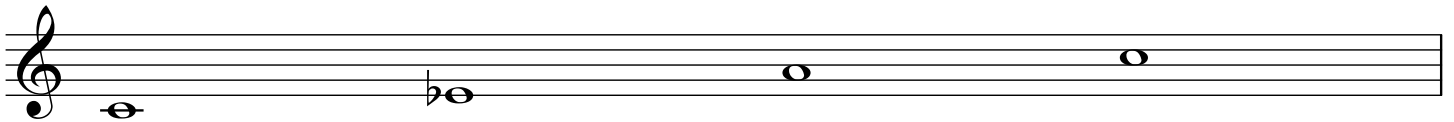
[d]



**Answer:**

- |                     |                           |
|---------------------|---------------------------|
| 1. PC Set:          | 2. Normal Order:          |
| 3. Prime Order:     | 4. PC Set (Forte) Number: |
| 5. Vector:          | 6. Interval-Classes:      |
| 7. Interval-Types:  |                           |
| 8. Alternate Names: |                           |

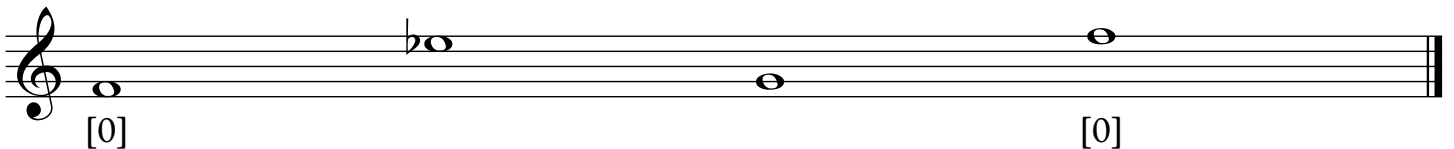
[e]



**Answer:**

- |                     |                           |
|---------------------|---------------------------|
| 1. PC Set:          | 2. Normal Order:          |
| 3. Prime Order:     | 4. PC Set (Forte) Number: |
| 5. Vector:          | 6. Interval-Classes:      |
| 7. Interval-Types:  |                           |
| 8. Alternate Names: |                           |

[f]



**Answer:**

- |                     |                           |
|---------------------|---------------------------|
| 1. PC Set:          | 2. Normal Order:          |
| 3. Prime Order:     | 4. PC Set (Forte) Number: |
| 5. Vector:          | 6. Interval-Classes:      |
| 7. Interval-Types:  |                           |
| 8. Alternate Names: |                           |