

Dr Ian Percy
Twelve-tone Analysis

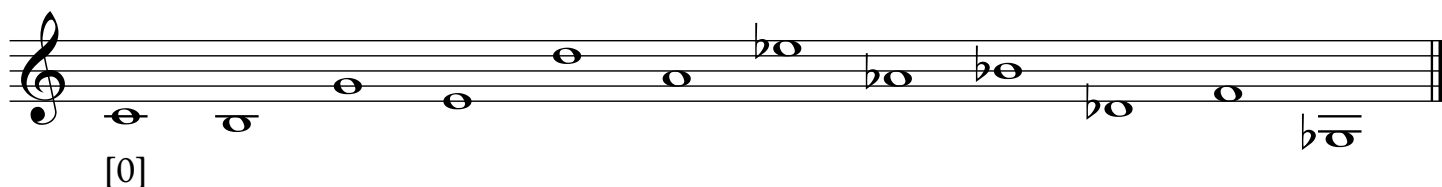
Worksheet Six

Twelve-Tone Rows and Pitch-Matrices

Question:

1. Write out the following **twelve-tone rows** as pitch-classes (numbers 0-11):
2. On the attached sheet, complete the three **pitch-matrices** for each example:
3. Is there anything worth noting about the examples?

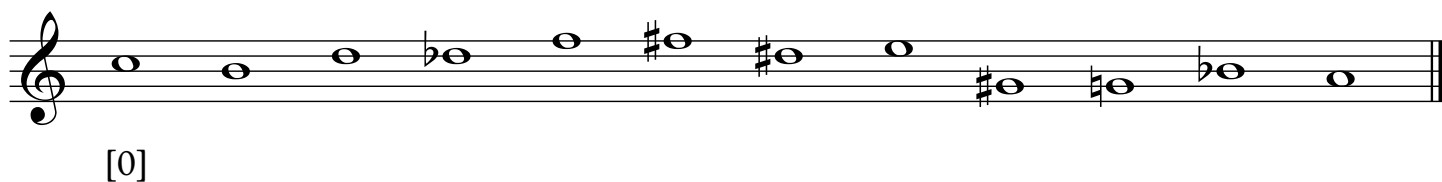
[a] Lyrische Suite (1926) - Alban Berg 1885-1935 (Transposed to C)



Answer:

1. 12-tone row in pitch-classes:
2. Three pitch-matrices:
3. Brief comments:

[b] String Quartet Op.28 (1938) - Anton Webern 1883-1945 (Transposed to C)



Answer:

1. 12-tone row in pitch-classes:
2. Three pitch-matrices:
3. Brief comments: