

# The Seven Modes of Tonic Major

## [Western Modality]

This is a collection of reference sheets illustrating the seven modes found within the Western Major Scale written from each note of the chromatic scale: i.e. The Seven Modes **of** C Major (the scale). Alongside the modes for each major scale is a page of the modes written from the same specific individual note: i.e. The Seven Modes **from** C (the note).

These reference sheets were compiled in indignant reaction to having to decipher and explain the many over-complicated (published) worksheets undergraduate (and sometimes postgraduate) students regularly bought to me in befuddled frustration. One would often witness examples where the modes had been written with chromatics instead of key signatures (sometimes both were present ...!!!), therefore displaying a complete lack of intuitive understanding of the modal system and its linear and vertical relationships to the 'Parent Scale' and completely confusing the reader.

Through following the format of these sheets, students can quickly learn to recognise repeated patterns (both visual and aural) and will be able to internalise the modal system to memory through reference to a parent major scale that can (of course) transpose to any note of the chromatic scale.

The purpose of these sheets is to establish clarity for study and reference, so where there is an obvious preference in enharmonic key signature, only one example is offered: why illustrate something in C<sup>#</sup> Major (7 sharps) when one can illustrate the same point in D<sup>b</sup> Major (5 flats). The one exception to this is the six-sharp/six-flat key signature: F<sup>#</sup>/G<sup>b</sup> Major.

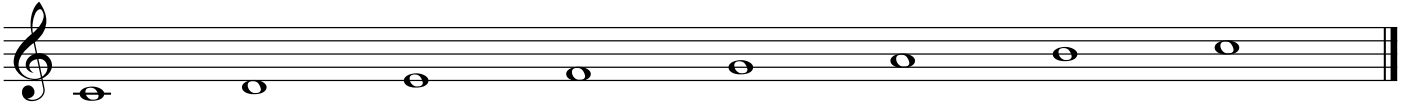
**Dr Ian Percy**

[www.ianpercy.me.uk](http://www.ianpercy.me.uk)  
[contact@ianpercy.me.uk](mailto:contact@ianpercy.me.uk)

# The Seven Modes of C

Ian Percy

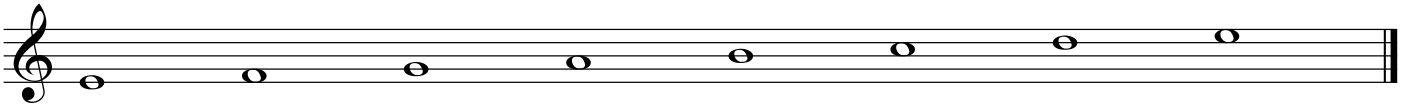
## Mode 1: C Major Scale (Ionian Mode):



## Mode 2: D Dorian (minor) Mode:



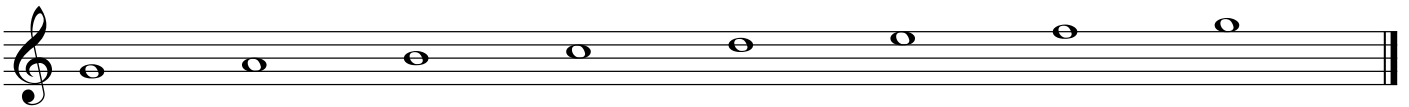
## Mode 3: E Phrygian (minor) Mode:



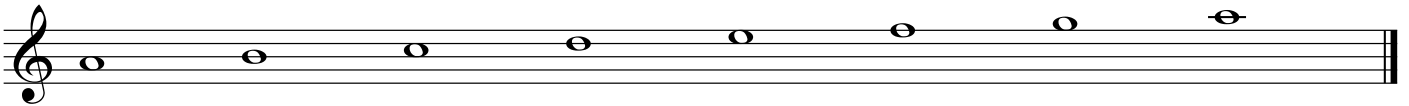
## Mode 4: F Lydian (Major) Mode:



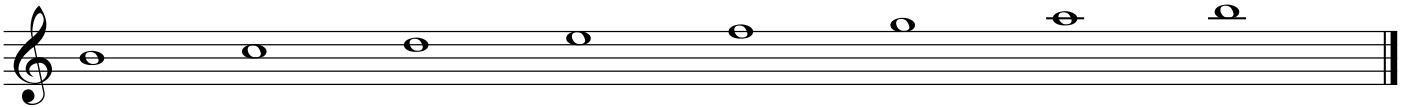
## Mode 5: G Mixolydian (Major/Dominant) Mode:



## Mode 6: A Aeolian (minor) Mode:



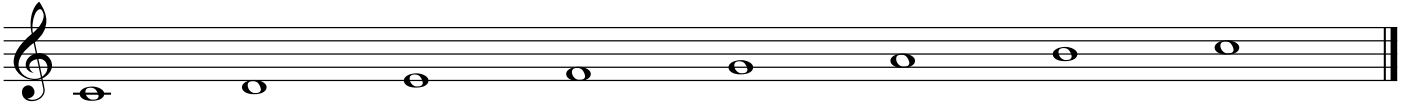
## Mode 7: B Locrian (half-diminished) Mode:



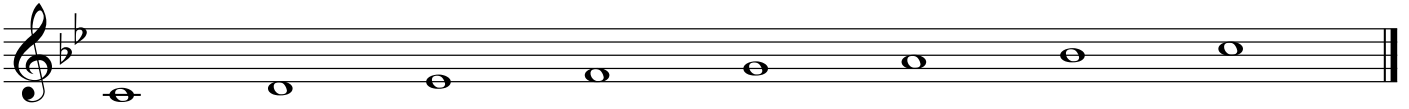
# The Seven Modes from C

Ian Percy

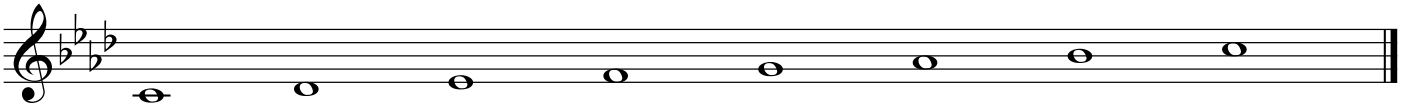
**Mode 1: C Major Scale (Ionian Mode):**



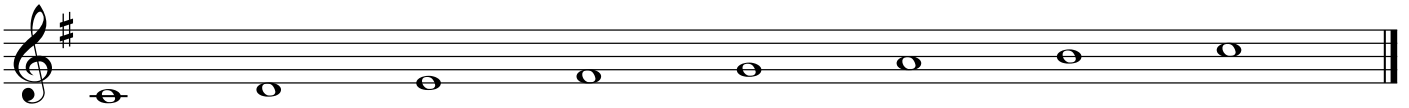
**Mode 2: C Dorian (minor) Mode: 2nd mode of Bb Major**



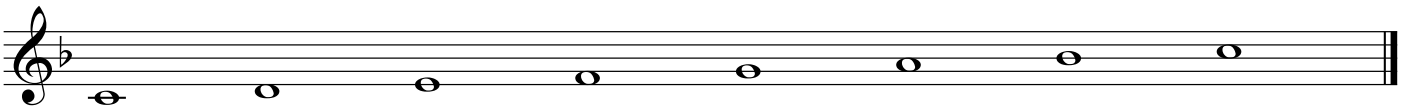
**Mode 3: C Phrygian (minor) Mode: 3rd mode of Ab Major**



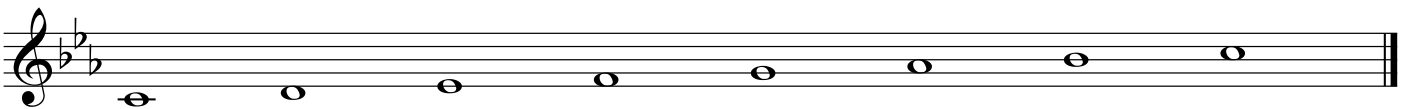
**Mode 4: C Lydian (Major) Mode: 4th mode of G Major**



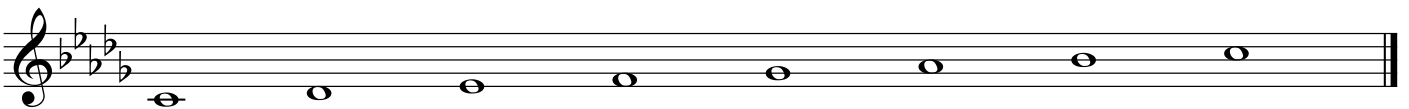
**Mode 5: C Mixolydian (Major/Dominant) Mode: 5th mode of F Major**



**Mode 6: C Aeolian (minor) Mode: 6th mode of Eb Major**



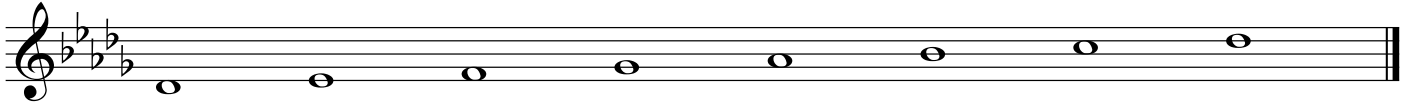
**Mode 7: C Locrian (half-diminished) Mode: 7th mode of Db Major**



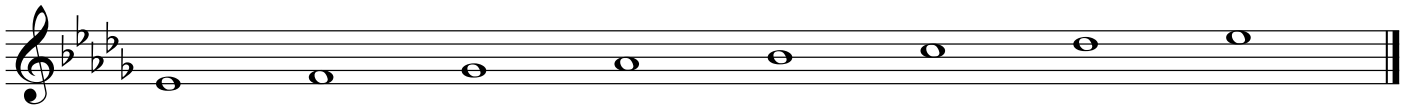
# The Seven Modes of D Flat

Ian Percy

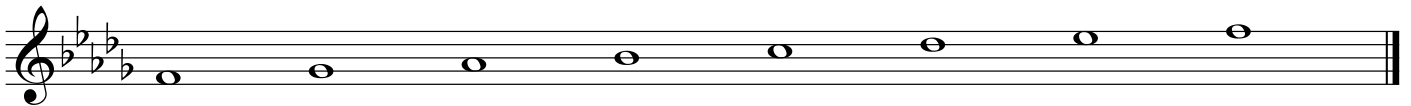
## Mode 1: Db Major Scale (Ionian Mode):



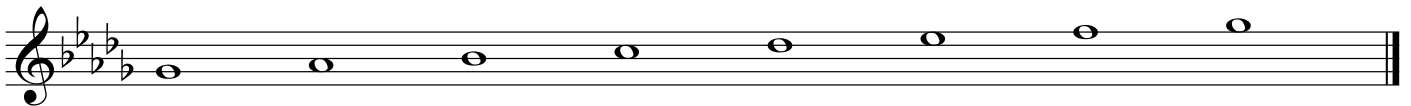
## Mode 2: Eb Dorian (minor) Mode:



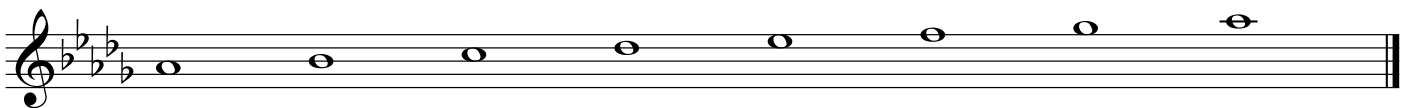
## Mode 3: F Phrygian (minor) Mode:



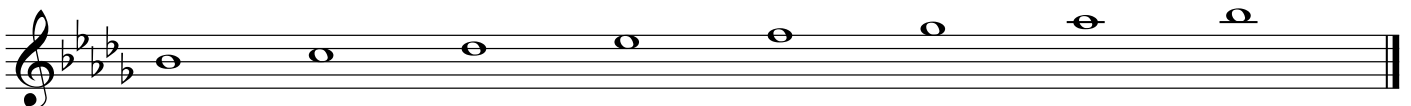
## Mode 4: Gb Lydian (Major) Mode:



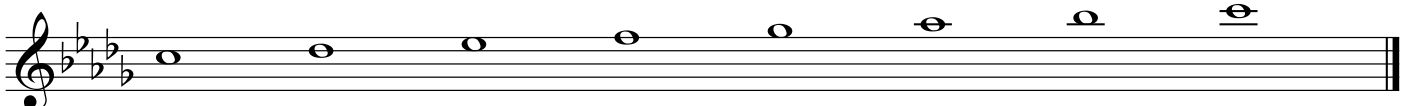
## Mode 5: Ab Mixolydian (Major/Dominant) Mode:



## Mode 6: Bb Aeolian (minor) Mode:



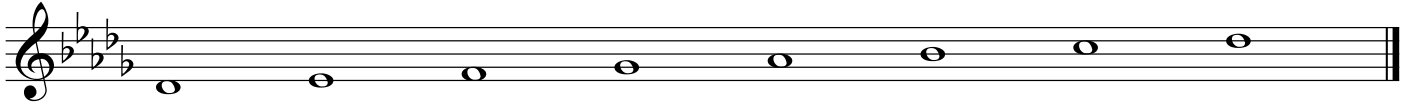
## Mode 7: C Locrian (half-diminished) Mode:



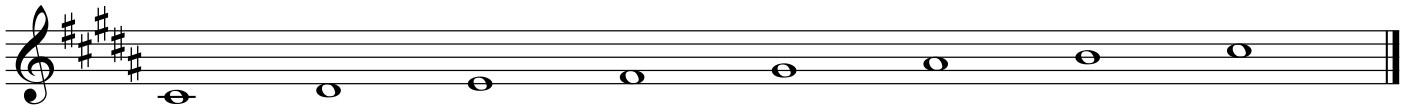
# The Seven Modes from C#/Db

Ian Percy

**Mode 1: Db Major Scale (Ionian Mode):**



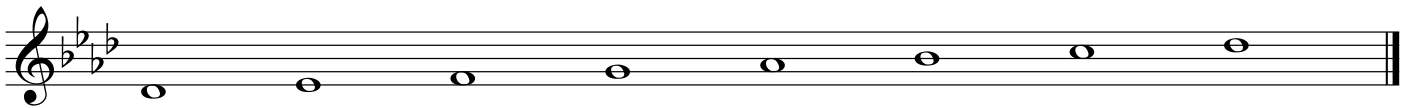
**Mode 2: C# Dorian (minor) Mode: 2nd mode of B Major**



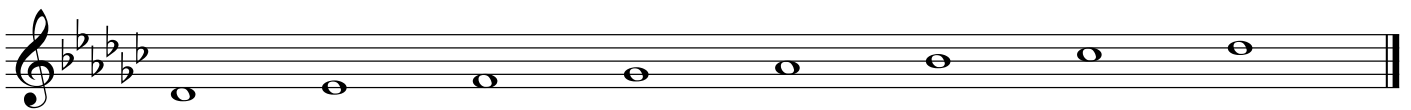
**Mode 3: C# Phrygian (minor) Mode: 3rd mode of A Major**



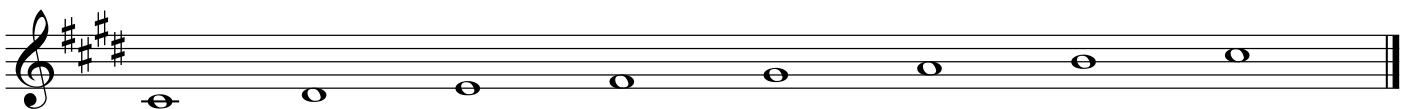
**Mode 4: Db Lydian (Major) Mode: 4th mode of Ab Major**



**Mode 5: Db Mixolydian (Major/Dominant) Mode: 5th mode of Gb Major**



**Mode 6: C# Aeolian (minor) Mode: 6th mode of E Major**



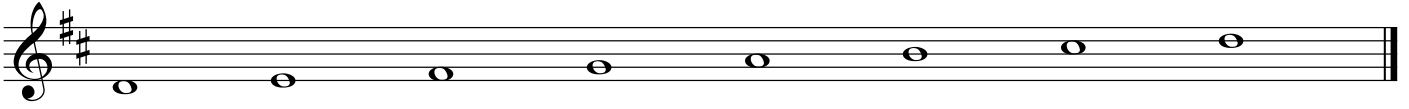
**Mode 7: C# Locrian (half-diminished) Mode: 7th mode of D Major**



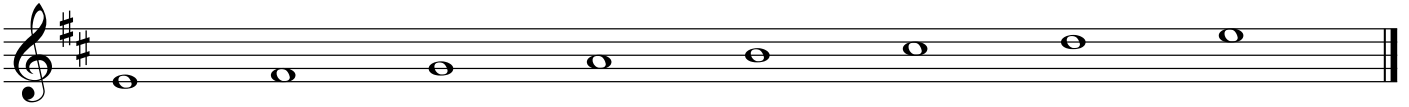
# The Seven Modes of D

Ian Percy

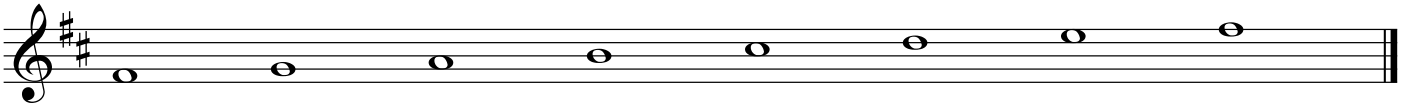
## Mode 1: D Major Scale (Ionian Mode):



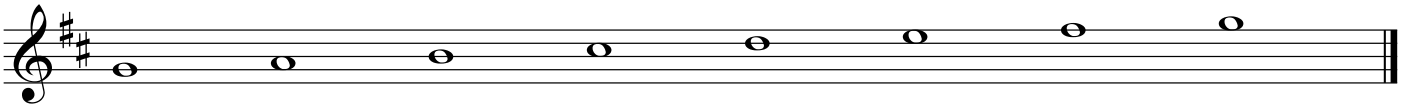
## Mode 2: E Dorian (minor) Mode:



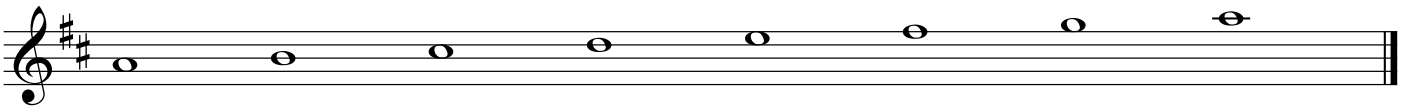
## Mode 3: F# Phrygian (minor) Mode:



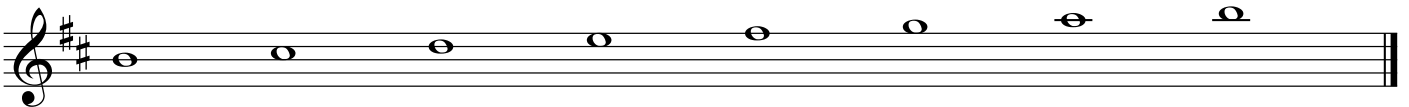
## Mode 4: G Lydian (Major) Mode:



## Mode 5: A Mixolydian (Major/Dominant) Mode:



## Mode 6: B Aeolian (minor) Mode:



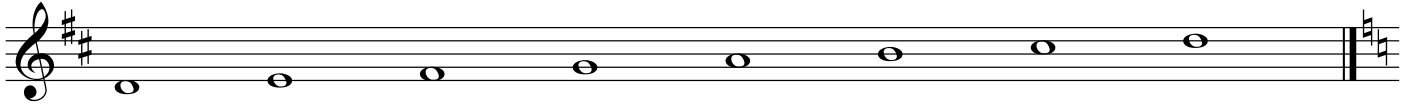
## Mode 7: C# Locrian (half-diminished) Mode:



# The Seven Modes from D

Ian Percy

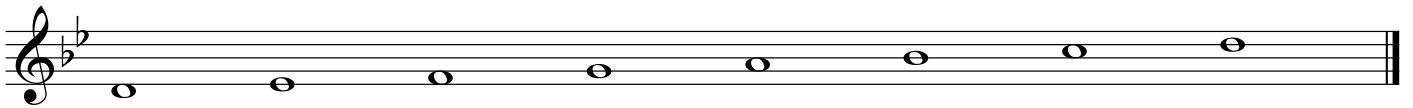
**Mode 1: D Major Scale (Ionian Mode):**



**Mode 2: D Dorian (minor) Mode: 2nd mode of C Major**



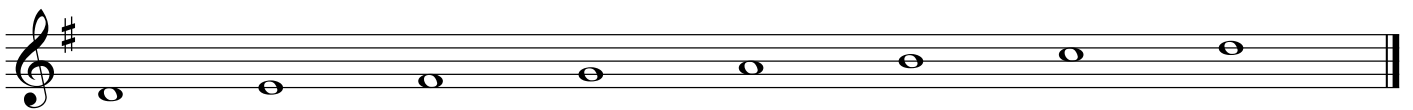
**Mode 3: D Phrygian (minor) Mode: 3rd mode of Bb Major**



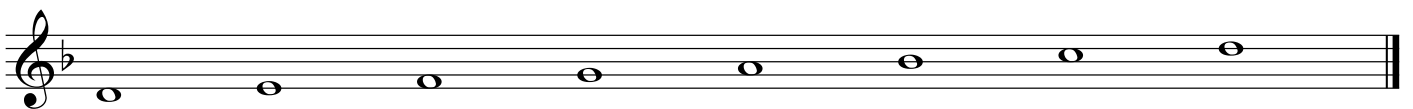
**Mode 4: D Lydian (Major) Mode: 4th mode of A Major**



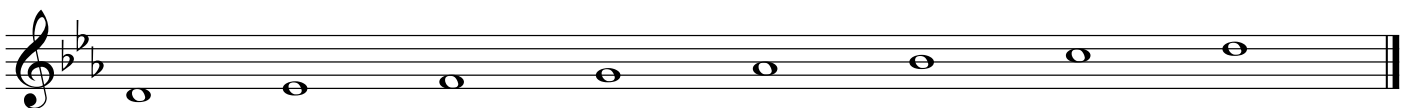
**Mode 5: D Mixolydian (Major/Dominant) Mode: 5th mode of G Major**



**Mode 6: D Aeolian (minor) Mode: 6th mode of F Major**



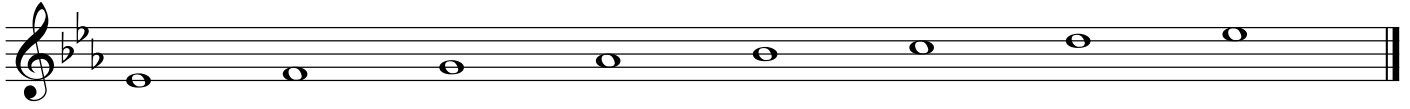
**Mode 7: D Locrian (half-diminished) Mode: 7th mode of Eb Major**



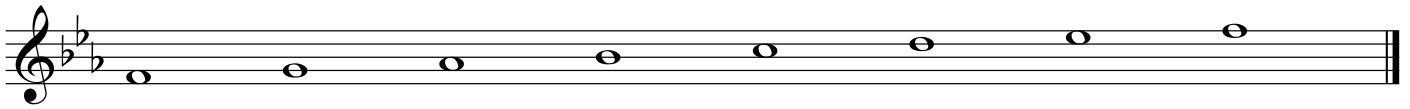
# The Seven Modes of E Flat

Ian Percy

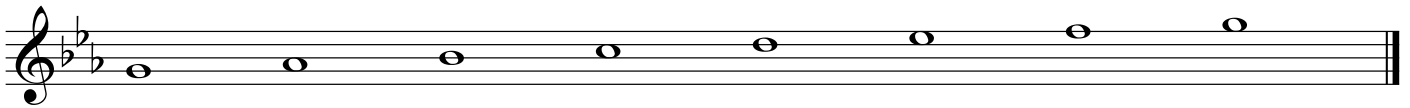
## Mode 1: Eb Major Scale (Ionian Mode):



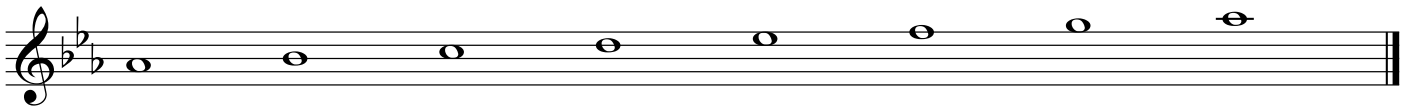
## Mode 2: F Dorian (minor) Mode:



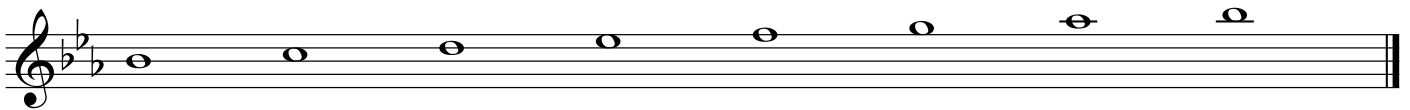
## Mode 3: G Phrygian (minor) Mode:



## Mode 4: Ab Lydian (Major) Mode:



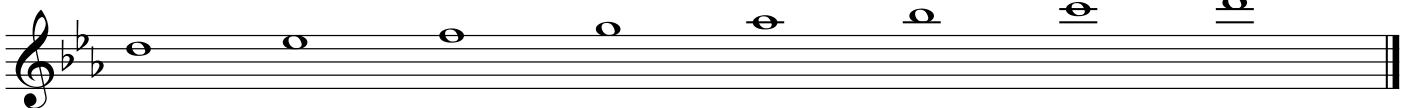
## Mode 5: Bb Mixolydian (Major/Dominant) Mode:



## Mode 6: C Aeolian (minor) Mode:



## Mode 7: D Locrian (half-diminished) Mode:

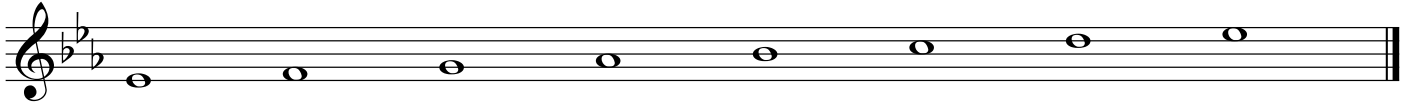




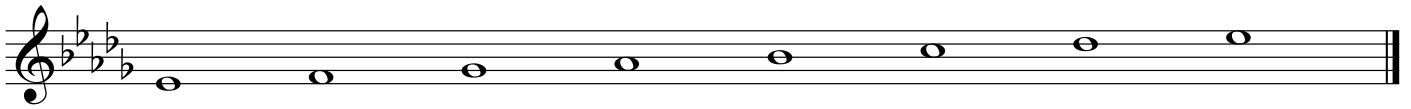
# The Seven Modes from Eb

Ian Percy

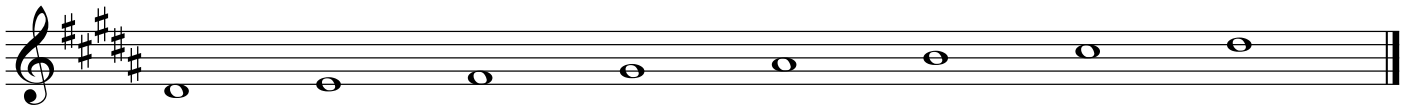
**Mode 1: Eb Major Scale (Ionian Mode):**



**Mode 2: Eb Dorian (minor) Mode: 2nd mode of Db Major**



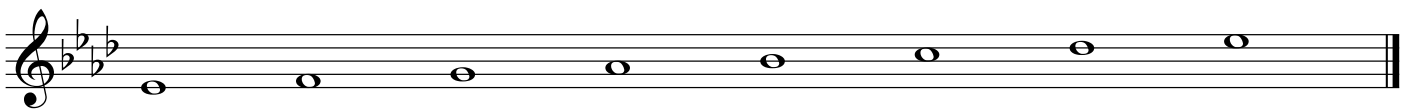
**Mode 3: Eb Phrygian (minor) Mode: 3rd mode of B Major**



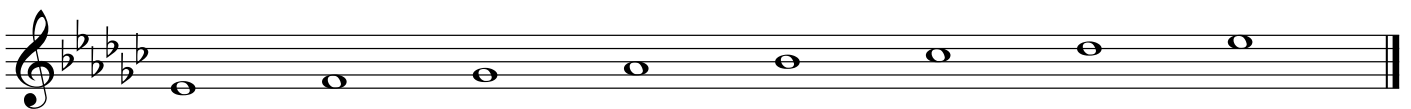
**Mode 4: Eb Lydian (Major) Mode: 4th mode of Bb Major**



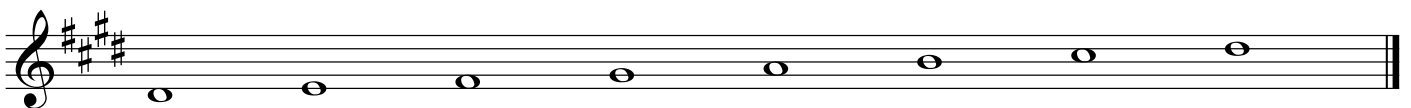
**Mode 5: Eb Mixolydian (Major/Dominant) Mode: 5th mode of Ab Major**



**Mode 6: Eb Aeolian (minor) Mode: 6th mode of Gb Major**



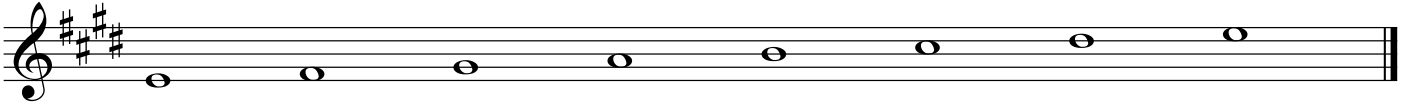
**Mode 7: D# Locrian (half-diminished) Mode: 7th mode of E Major**



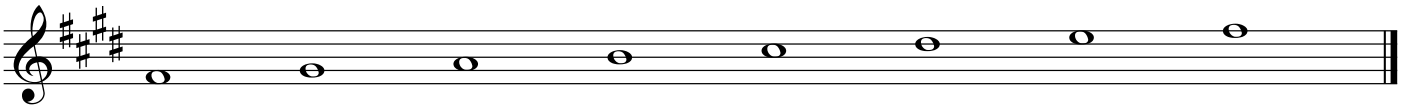
# The Seven Modes of E

Ian Percy

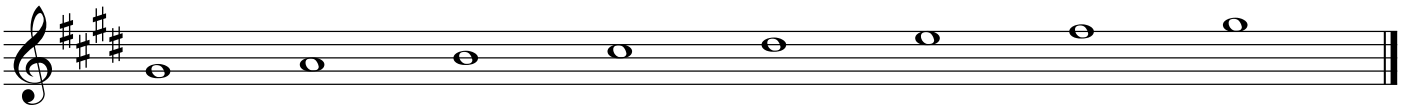
## Mode 1: E Major Scale (Ionian Mode):



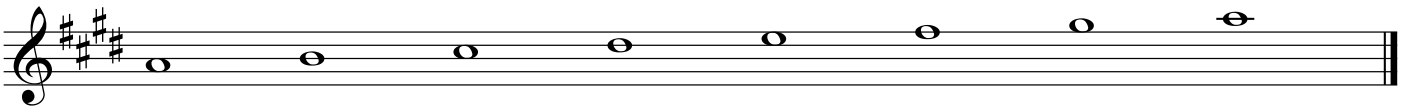
## Mode 2: F# Dorian (minor) Mode:



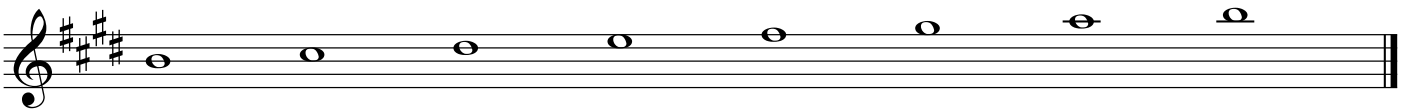
## Mode 3: G# Phrygian (minor) Mode:



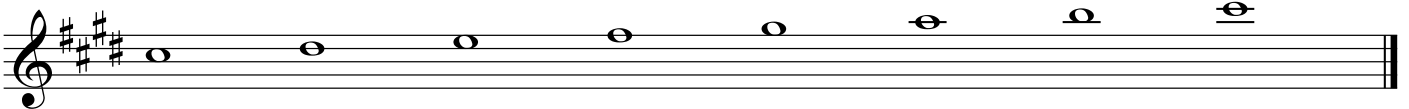
## Mode 4: A Lydian (Major) Mode:



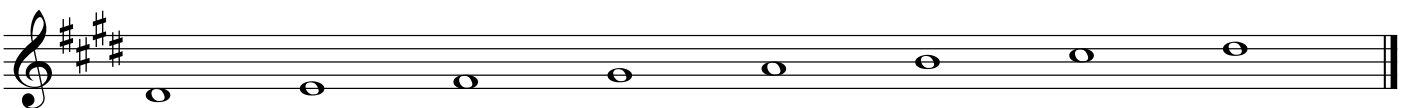
## Mode 5: B Mixolydian (Major/Dominant) Mode:



## Mode 6: C# Aeolian (minor) Mode:



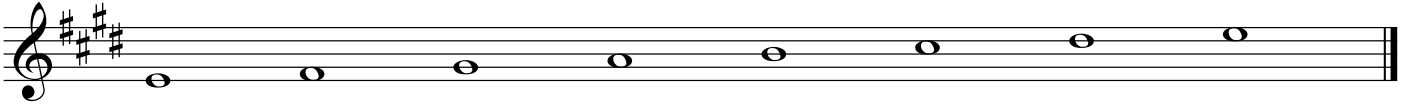
## Mode 7: D# Locrian (half-diminished) Mode:



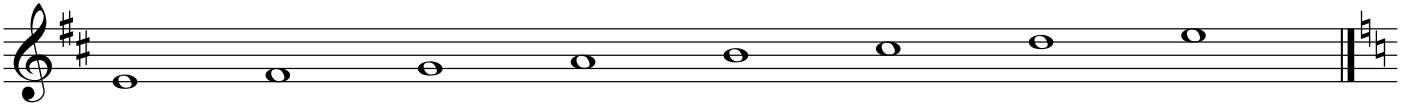
# The Seven Modes from E

Ian Percy

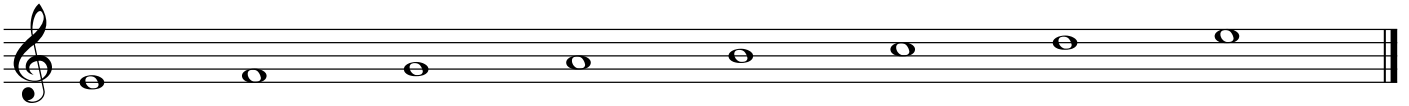
**Mode 1: E Major Scale (Ionian Mode):**



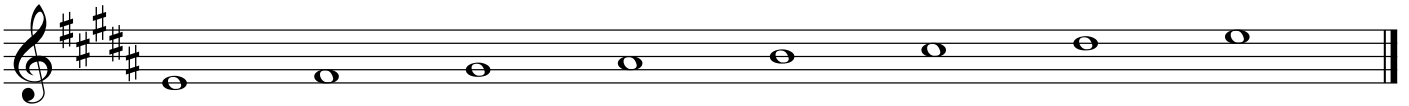
**Mode 2: E Dorian (minor) Mode: 2nd mode of D Major**



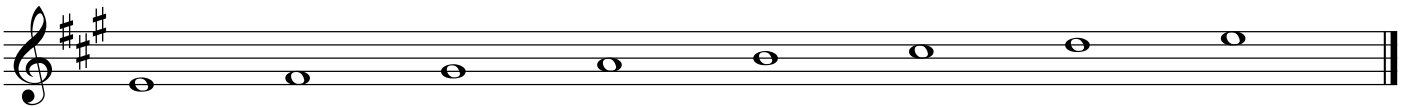
**Mode 3: E Phrygian (minor) Mode: 3rd mode of C Major**



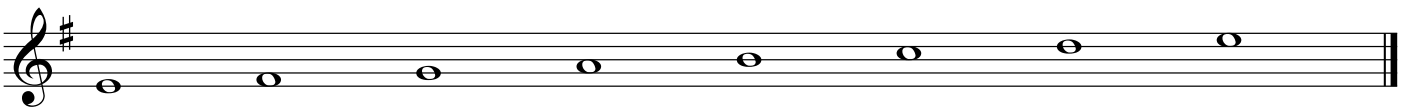
**Mode 4: E Lydian (Major) Mode: 4th mode of B Major**



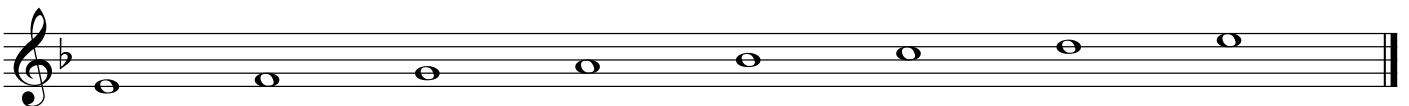
**Mode 5: E Mixolydian (Major/Dominant) Mode: 5th mode of A Major**



**Mode 6: E Aeolian (minor) Mode: 6th mode of G Major**



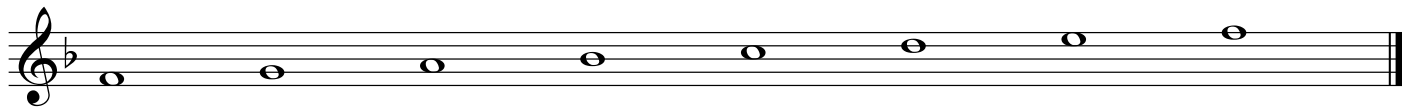
**Mode 7: E Locrian (half-diminished) Mode: 7th mode of F Major**



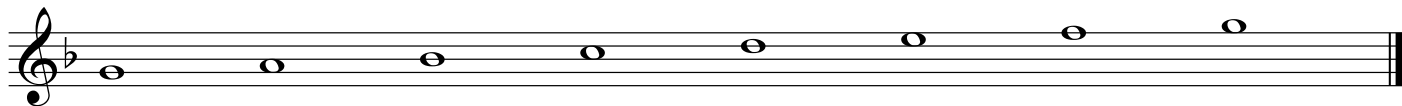
# The Seven Modes of F

Ian Percy

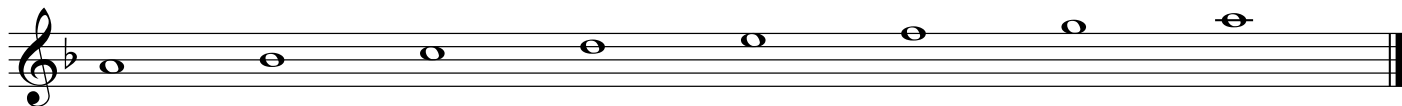
## Mode 1: F Major Scale (Ionian Mode):



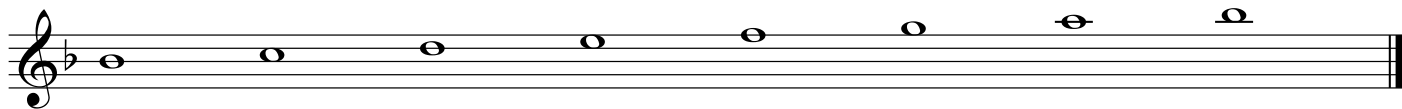
## Mode 2: G Dorian (minor) Mode:



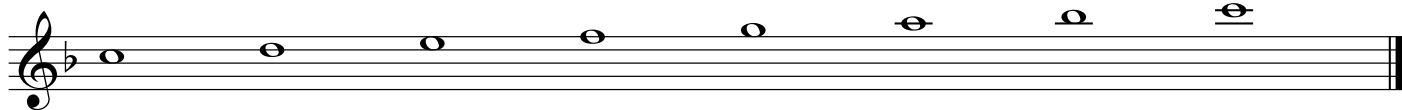
## Mode 3: A Phrygian (minor) Mode:



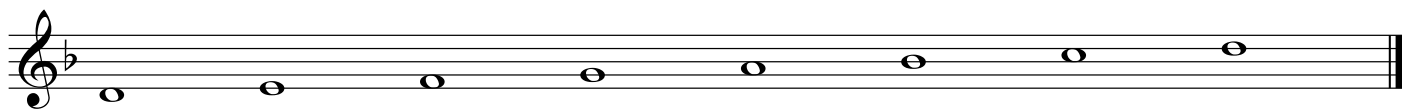
## Mode 4: Bb Lydian (Major) Mode:



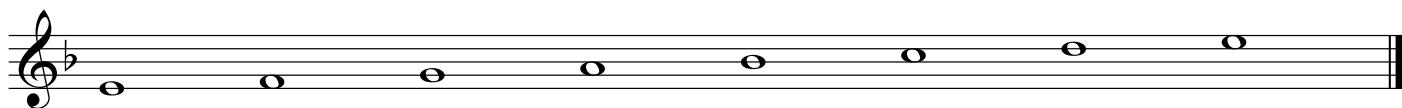
## Mode 5: C Mixolydian (Major/Dominant) Mode:



## Mode 6: D Aeolian (minor) Mode:



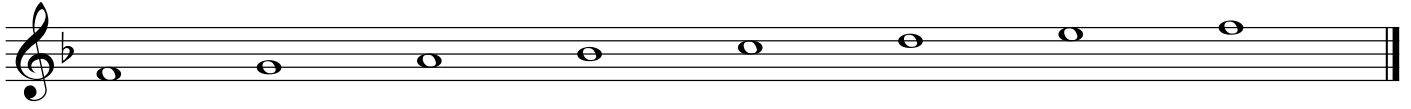
## Mode 7: E Locrian (half-diminished) Mode:



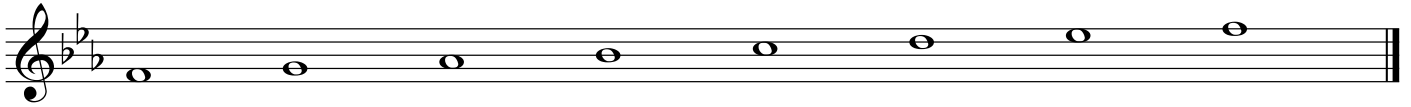
# The Seven Modes from F

Ian Percy

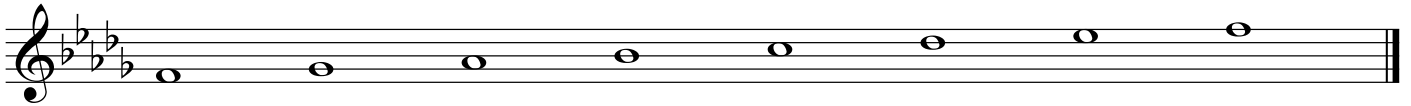
**Mode 1: F Major Scale (Ionian Mode):**



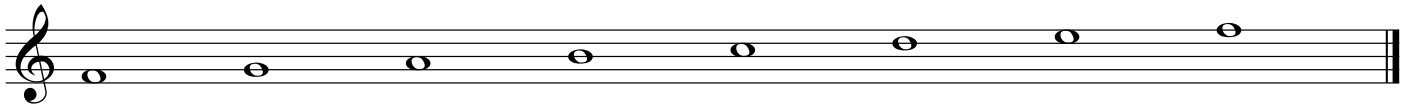
**Mode 2: F Dorian (minor) Mode: 2nd mode of Eb Major**



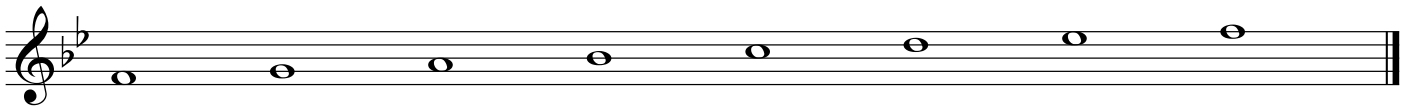
**Mode 3: F Phrygian (minor) Mode: 3rd mode of Db Major**



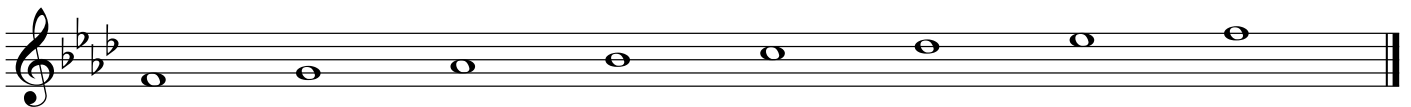
**Mode 4: F Lydian (Major) Mode: 4th mode of C Major**



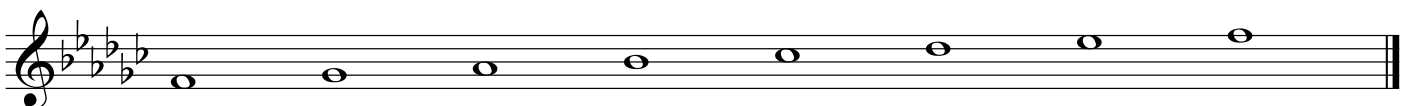
**Mode 5: F Mixolydian (Major/Dominant) Mode: 5th mode of Bb Major**



**Mode 6: F Aeolian (minor) Mode: 6th mode of Ab Major**



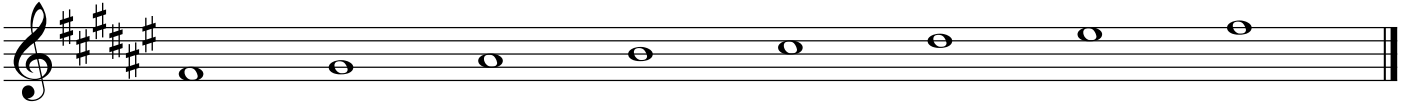
**Mode 7: F Locrian (half-diminished) Mode: 7th mode of Gb Major**



# The Seven Modes of F Sharp

Ian Percy

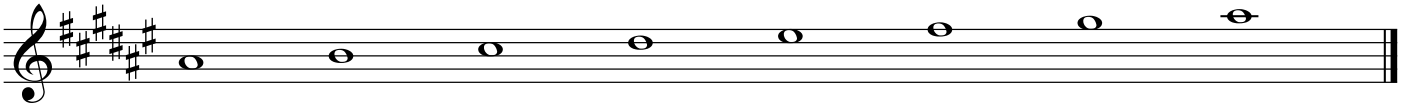
## Mode 1: F# Major Scale (Ionian Mode):



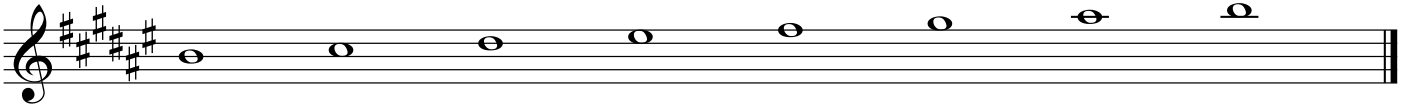
## Mode 2: G# Dorian (minor) Mode:



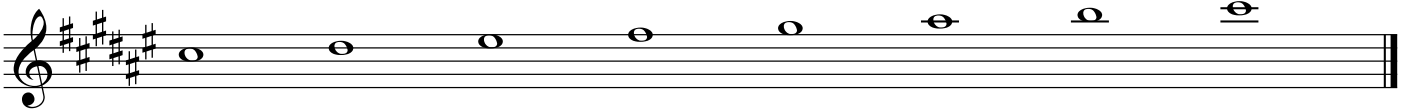
## Mode 3: A# Phrygian (minor) Mode:



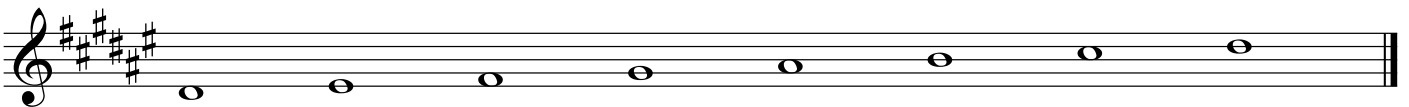
## Mode 4: B Lydian (Major) Mode:



## Mode 5: C# Mixolydian (Major/Dominant) Mode:



## Mode 6: D# Aeolian (minor) Mode:



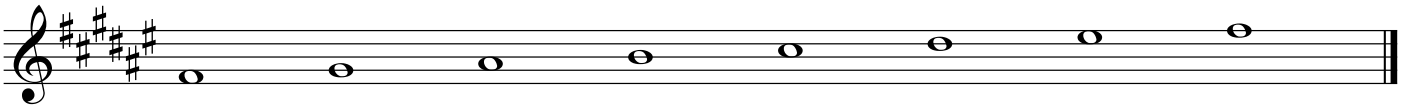
## Mode 7: E# Locrian (half-diminished) Mode:



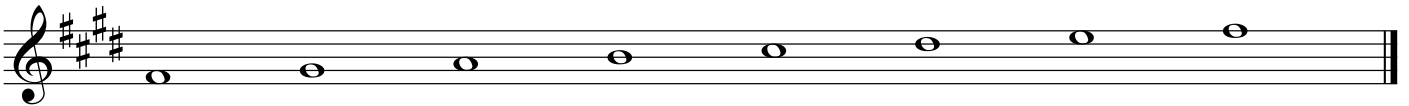
# The Seven Modes from F#/Gb

Ian Percy

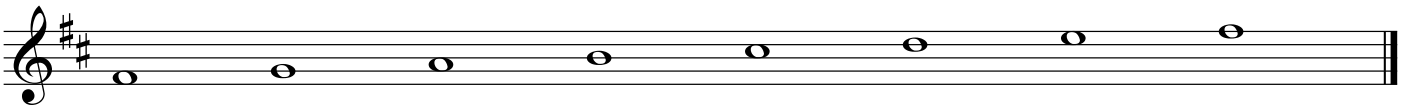
**Mode 1: F# Major Scale (Ionian Mode):**



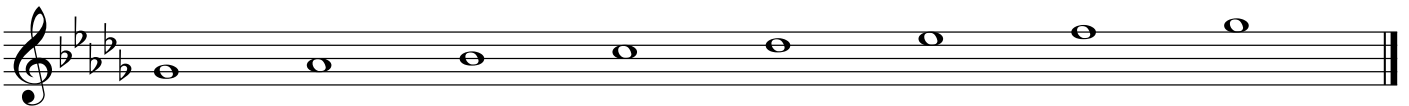
**Mode 2: F# Dorian (minor) Mode: 2nd mode of E Major**



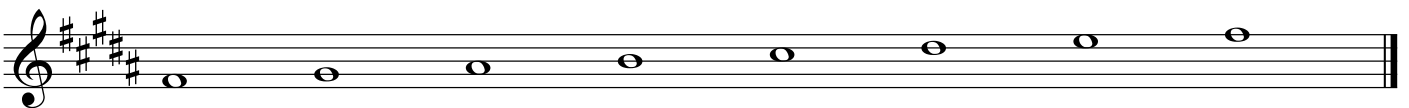
**Mode 3: F# Phrygian (minor) Mode: 3rd mode of D Major**



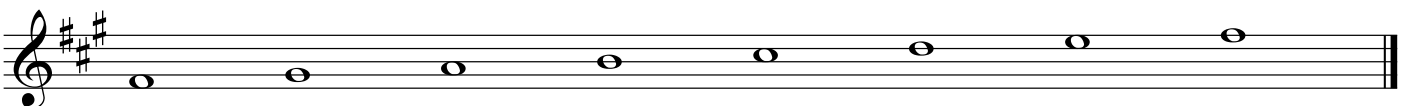
**Mode 4: Gb Lydian (Major) Mode: 4th mode of Db Major**



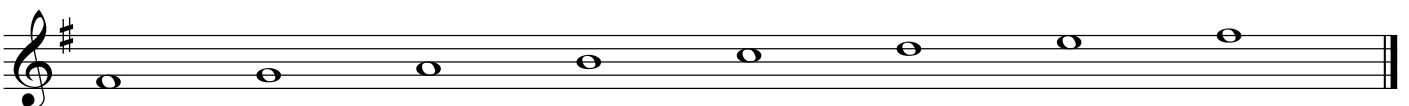
**Mode 5: F# Mixolydian (Major/Dominant) Mode: 5th mode of B Major**



**Mode 6: F# Aeolian (minor) Mode: 6th mode of A Major**



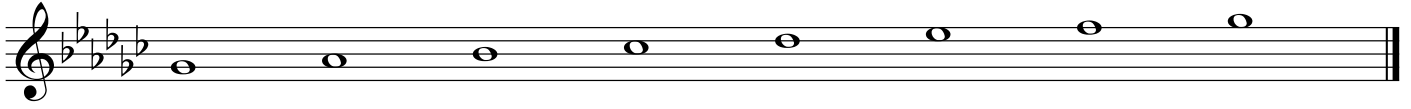
**Mode 7: F# Locrian (half-diminished) Mode: 7th mode of G Major**



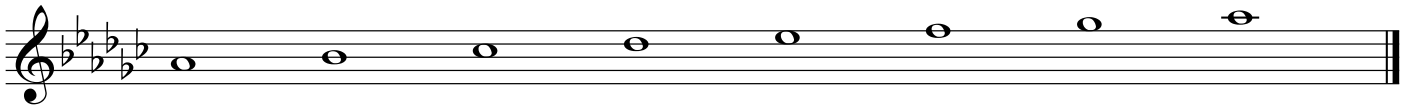
# The Seven Modes of G Flat

Ian Percy

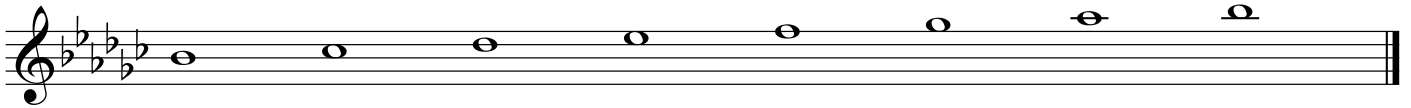
## Mode 1: Gb Major Scale (Ionian Mode):



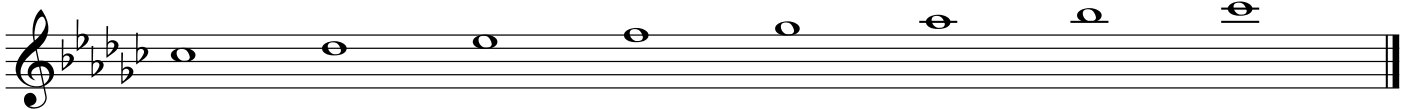
## Mode 2: Ab Dorian (minor) Mode:



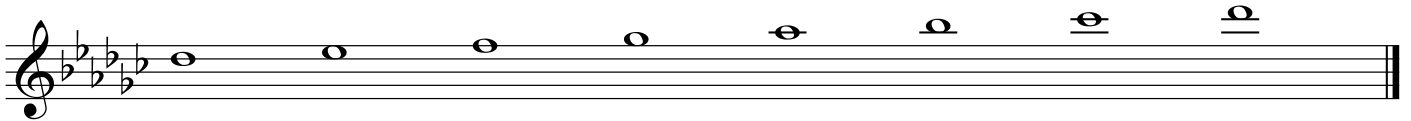
## Mode 3: Bb Phrygian (minor) Mode:



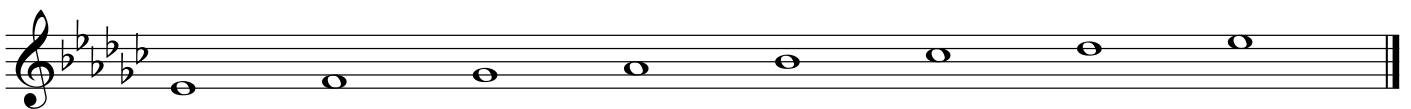
## Mode 4: Cb Lydian (Major) Mode:



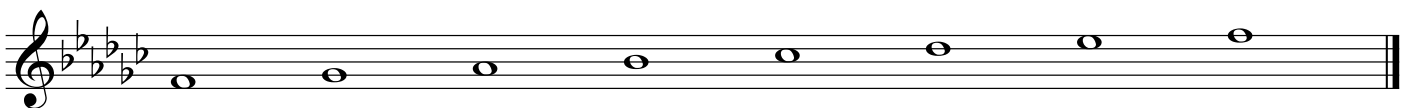
## Mode 5: Db Mixolydian (Major/Dominant) Mode:



## Mode 6: Eb Aeolian (minor) Mode:



## Mode 7: F Locrian (half-diminished) Mode:

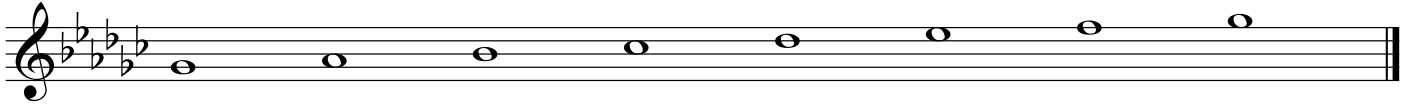




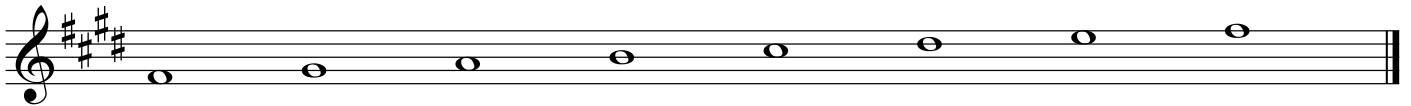
# The Seven Modes from Gb/F#

Ian Percy

**Mode 1: Gb Major Scale (Ionian Mode):**



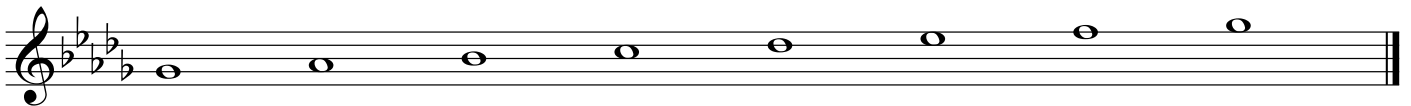
**Mode 2: F# Dorian (minor) Mode: 2nd mode of E Major**



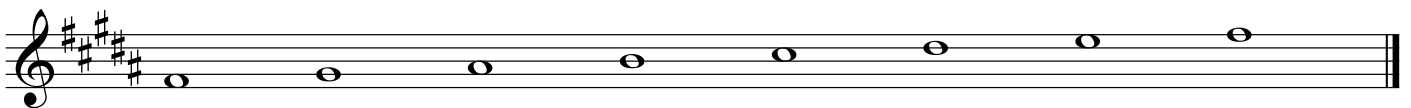
**Mode 3: F# Phrygian (minor) Mode: 3rd mode of D Major**



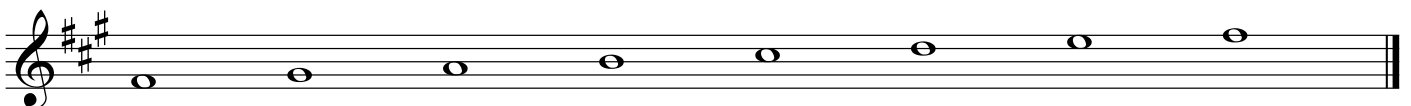
**Mode 4: Gb Lydian (Major) Mode: 4th mode of Db Major**



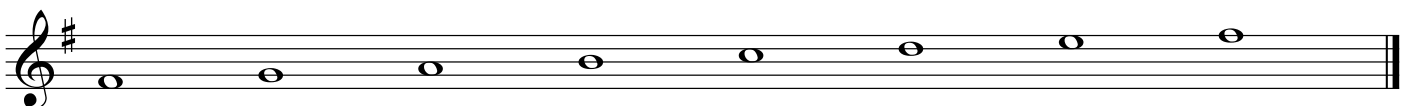
**Mode 5: F# Mixolydian (Major/Dominant) Mode: 5th mode of B Major**



**Mode 6: F# Aeolian (minor) Mode: 6th mode of A Major**



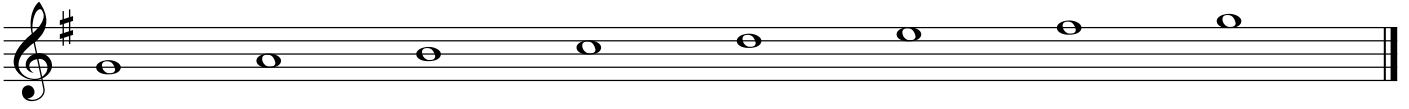
**Mode 7: F# Locrian (half-diminished) Mode: 7th mode of G Major**



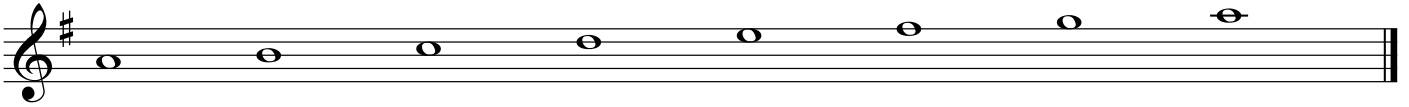
# The Seven Modes of G

Ian Percy

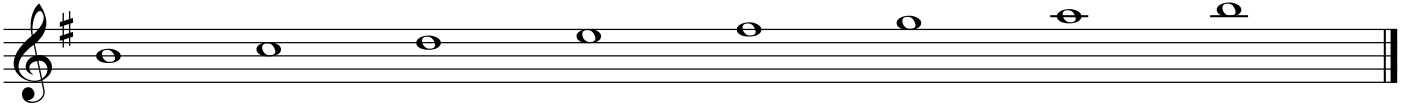
## Mode 1: G Major Scale (Ionian Mode):



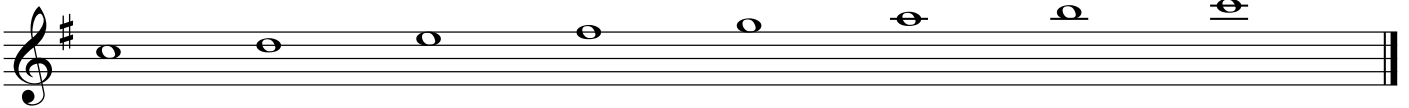
## Mode 2: A Dorian (minor) Mode:



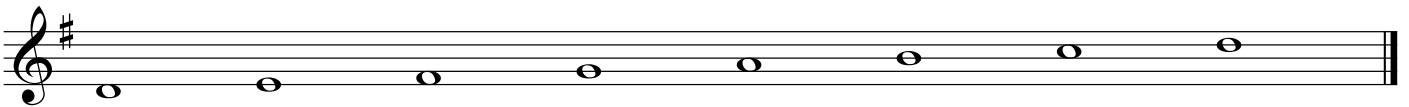
## Mode 3: B Phrygian (minor) Mode:



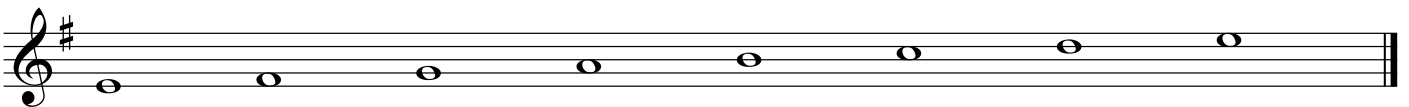
## Mode 4: C Lydian (Major) Mode:



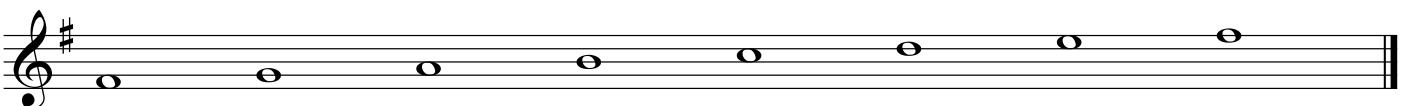
## Mode 5: D Mixolydian (Major/Dominant) Mode:



## Mode 6: E Aeolian (minor) Mode:



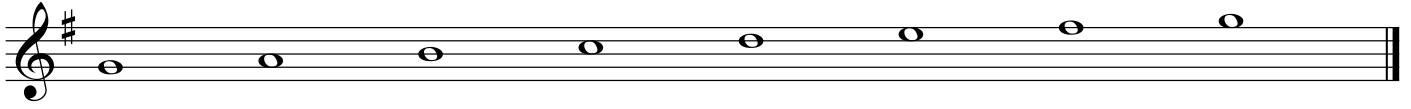
## Mode 7: F# Locrian (half-diminished) Mode:



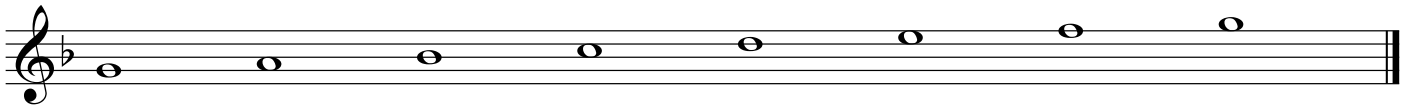
# The Seven Modes from G

Ian Percy

**Mode 1: G Major Scale (Ionian Mode):**



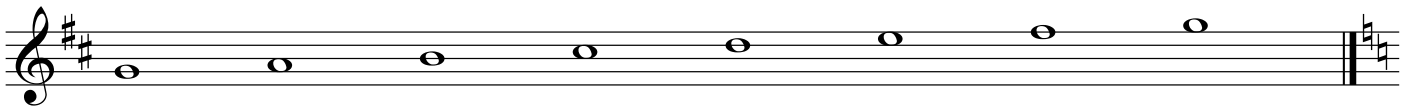
**Mode 2: G Dorian (minor) Mode: 2nd mode of F Major**



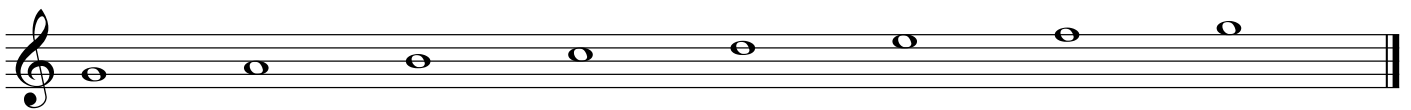
**Mode 3: G Phrygian (minor) Mode: 3rd mode of Eb Major**



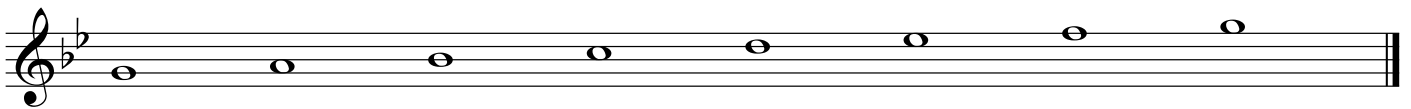
**Mode 4: G Lydian (Major) Mode: 4th mode of D Major**



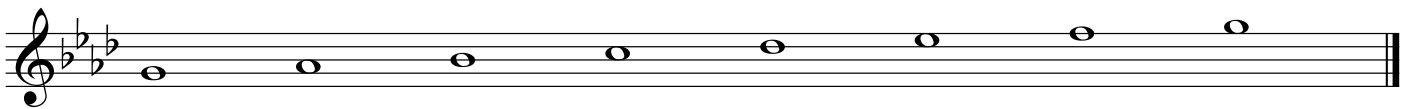
**Mode 5: G Mixolydian (Major/Dominant) Mode: 5th mode of C Major**



**Mode 6: G Aeolian (minor) Mode: 6th mode of Bb Major**



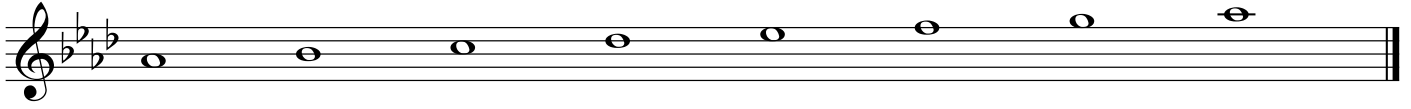
**Mode 7: G Locrian (half-diminished) Mode: 7th mode of Ab Major**



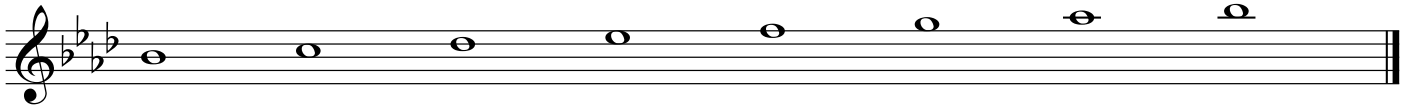
# The Seven Modes of A Flat

Ian Percy

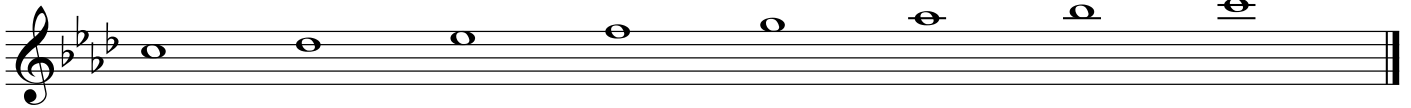
## Mode 1: Ab Major Scale (Ionian Mode):



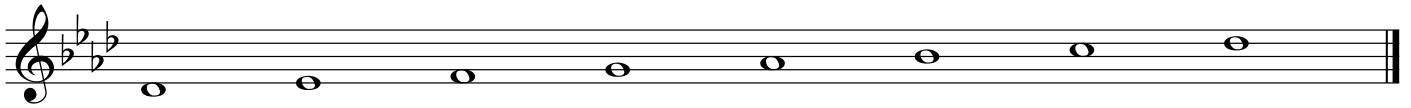
## Mode 2: Bb Dorian (minor) Mode:



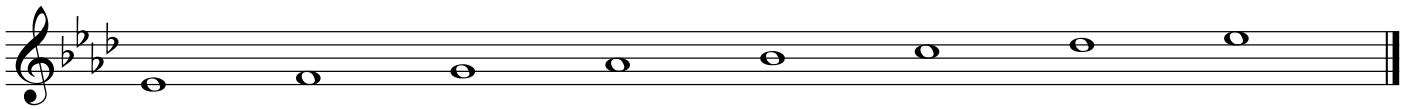
## Mode 3: C Phrygian (minor) Mode:



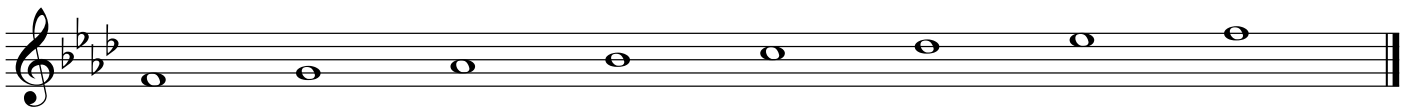
## Mode 4: Db Lydian (Major) Mode:



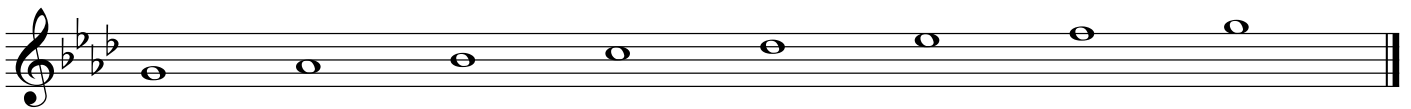
## Mode 5: Eb Mixolydian (Major/Dominant) Mode:



## Mode 6: F Aeolian (minor) Mode:



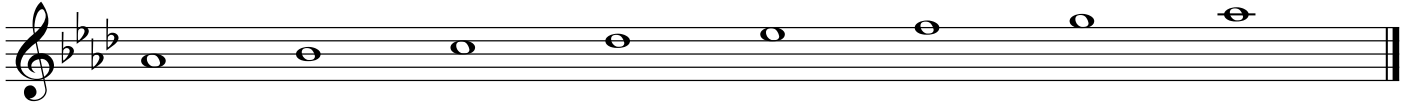
## Mode 7: G Locrian (half-diminished) Mode:



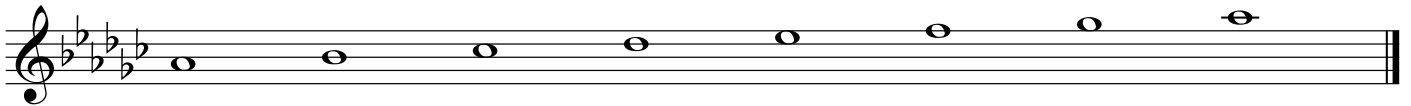
# The Seven Modes from Ab/G#

Ian Percy

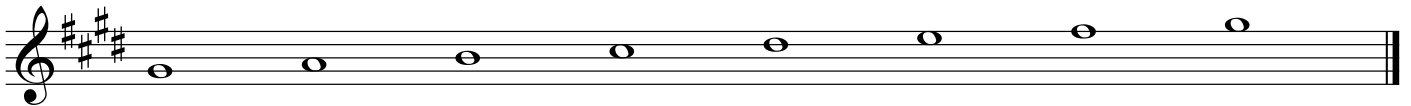
**Mode 1: Ab Major Scale (Ionian Mode):**



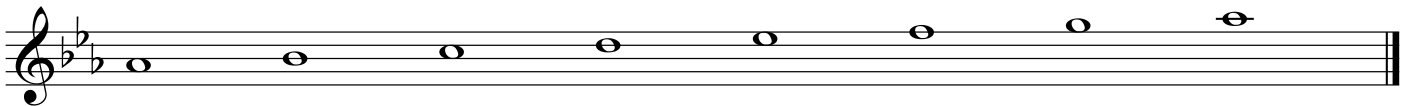
**Mode 2: Ab Dorian (minor) Mode: 2nd mode of Gb Major**



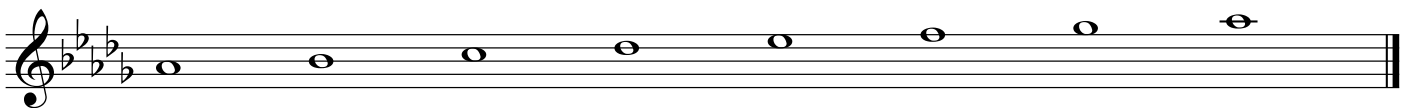
**Mode 3: G# Phrygian (minor) Mode: 3rd mode of E Major**



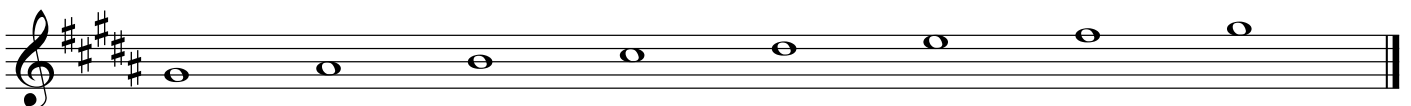
**Mode 4: Ab Lydian (Major) Mode: 4th mode of Eb Major**



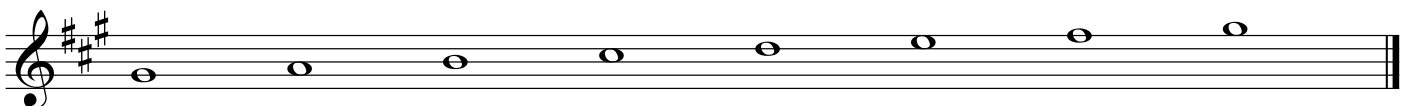
**Mode 5: Ab Mixolydian (Major/Dominant) Mode: 5th mode of Db Major**



**Mode 6: G# Aeolian (minor) Mode: 6th mode of B Major**



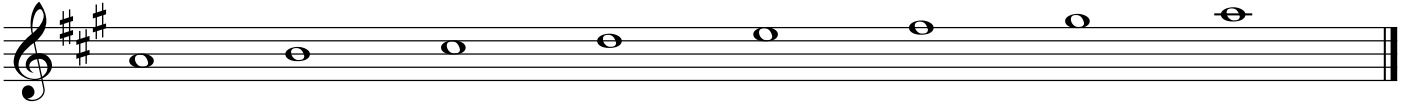
**Mode 7: G# Locrian (half-diminished) Mode: 7th mode of A Major**



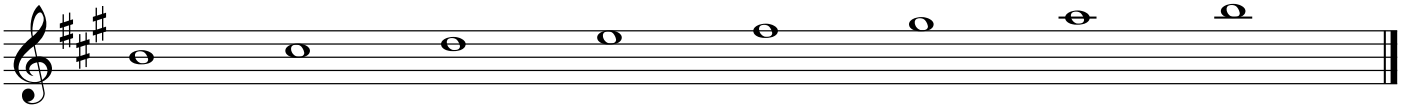
# The Seven Modes of A

Ian Percy

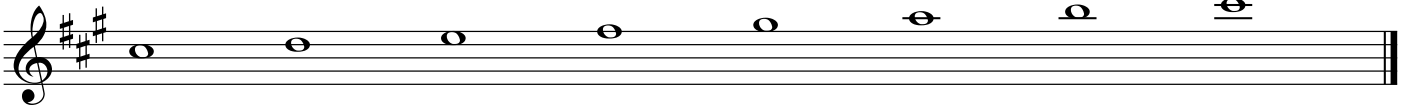
## Mode 1: A Major Scale (Ionian Mode):



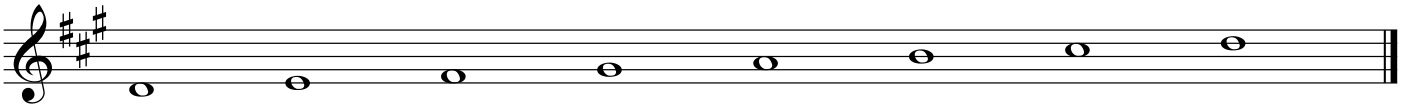
## Mode 2: B Dorian (minor) Mode:



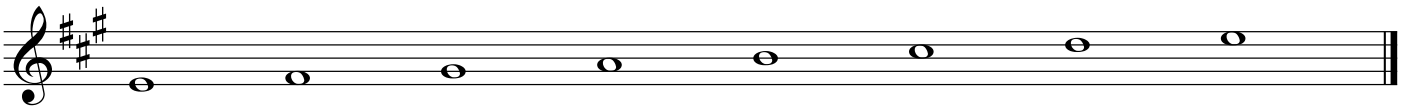
## Mode 3: C# Phrygian (minor) Mode:



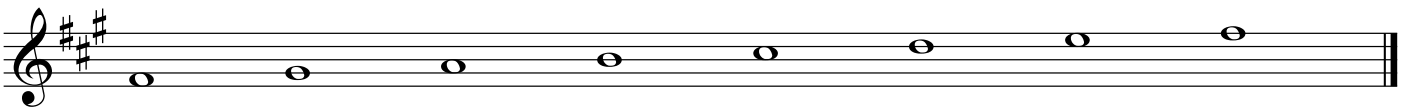
## Mode 4: D Lydian (Major) Mode:



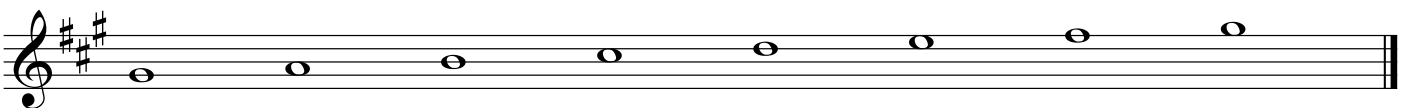
## Mode 5: E Mixolydian (Major/Dominant) Mode:



## Mode 6: F# Aeolian (minor) Mode:



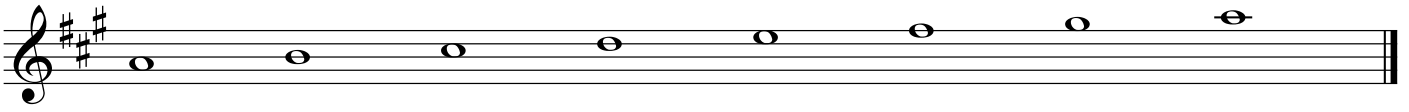
## Mode 7: G# Locrian (half-diminished) Mode:



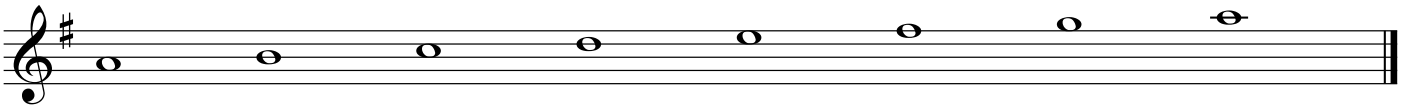
# The Seven Modes from A

Ian Percy

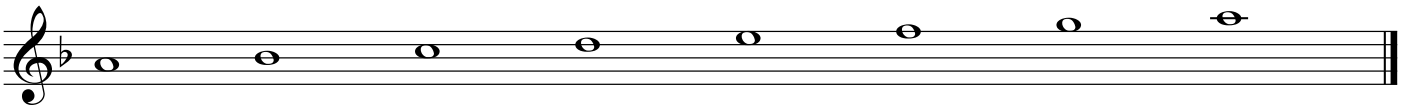
**Mode 1: A Major Scale (Ionian Mode):**



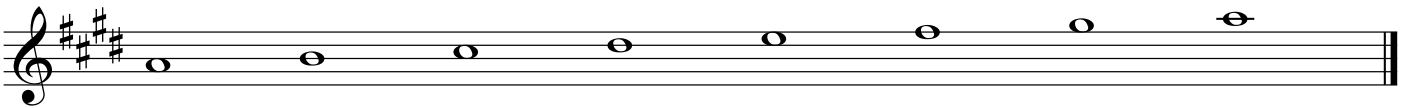
**Mode 2: A Dorian (minor) Mode: 2nd mode of G Major**



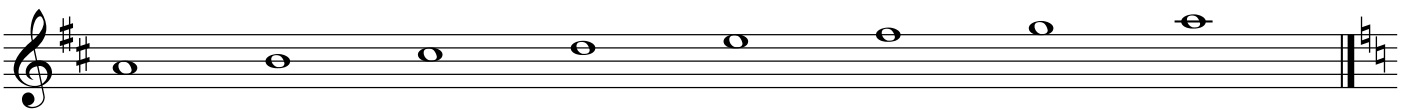
**Mode 3: A Phrygian (minor) Mode: 3rd mode of F Major**



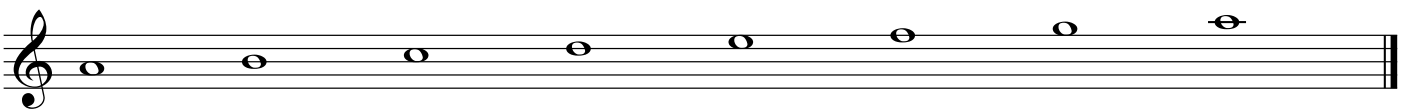
**Mode 4: A Lydian (Major) Mode: 4th mode of E Major**



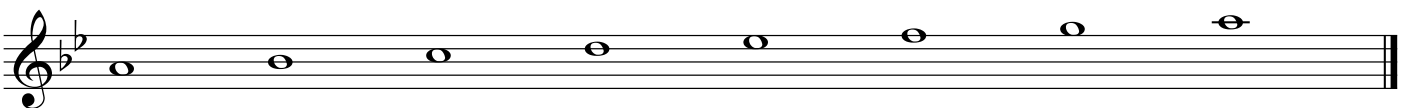
**Mode 5: A Mixolydian (Major/Dominant) Mode: 5th mode of D Major**



**Mode 6: A Aeolian (minor) Mode: 6th mode of C Major**



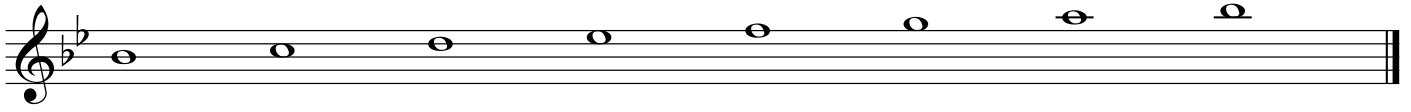
**Mode 7: A Locrian (half-diminished) Mode: 7th mode of Bb Major**



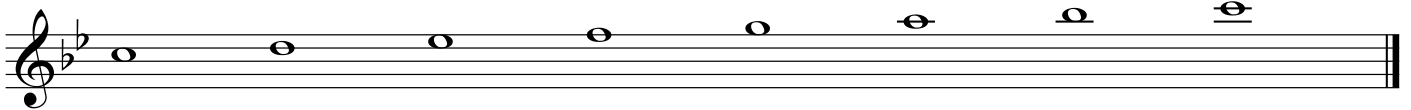
# The Seven Modes of B Flat

Ian Percy

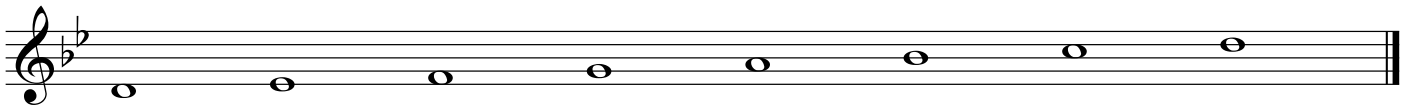
## Mode 1: Bb Major Scale (Ionian Mode):



## Mode 2: C Dorian (minor) Mode:



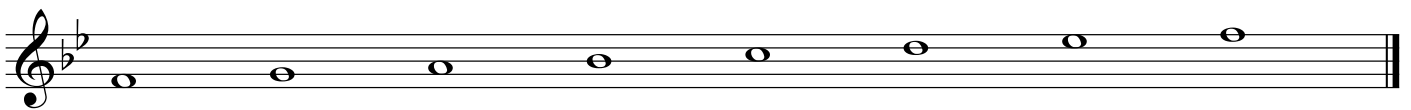
## Mode 3: D Phrygian (minor) Mode:



## Mode 4: Eb Lydian (Major) Mode:



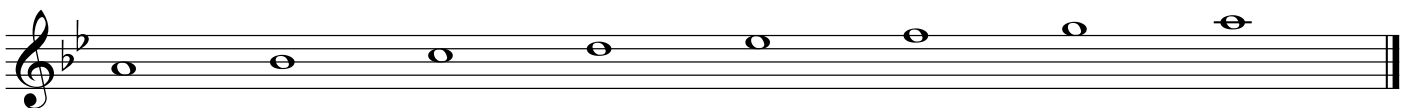
## Mode 5: F Mixolydian (Major/Dominant) Mode:



## Mode 6: G Aeolian (minor) Mode:



## Mode 7: A Locrian (half-diminished) Mode:

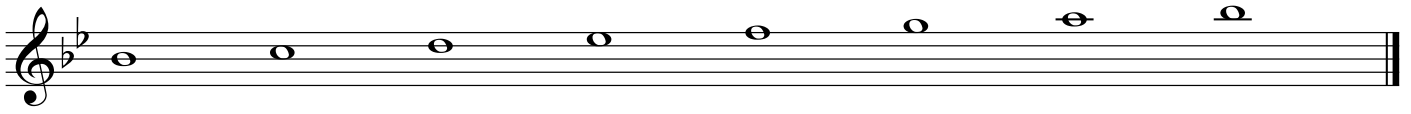




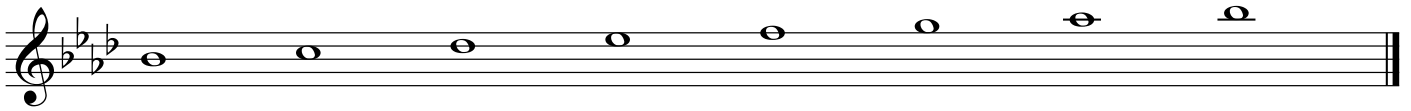
# The Seven Modes from Bb/A#

Ian Percy

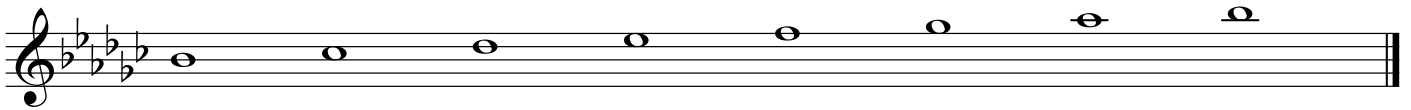
**Mode 1: Bb Major Scale (Ionian Mode):**



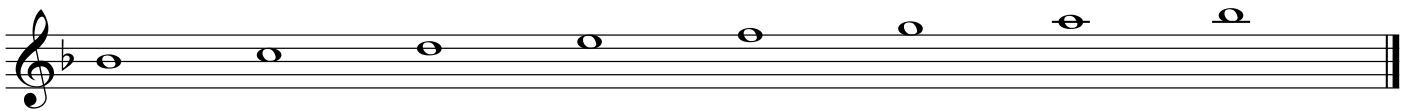
**Mode 2: Bb Dorian (minor) Mode: 2nd mode of Ab Major**



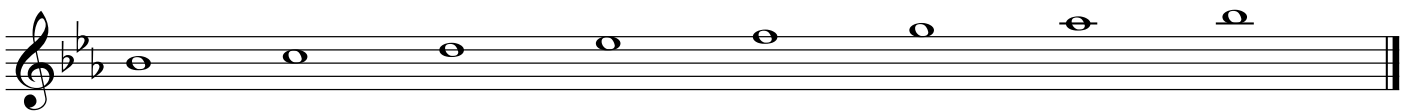
**Mode 3: Bb Phrygian (minor) Mode: 3rd mode of Gb Major**



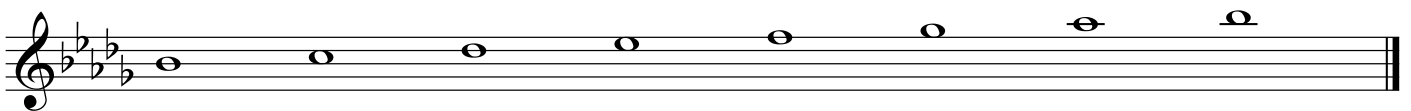
**Mode 4: Bb Lydian (Major) Mode: 4th mode of F Major**



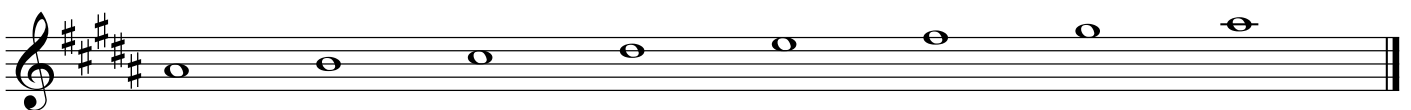
**Mode 5: Bb Mixolydian (Major/Dominant) Mode: 5th mode of Eb Major**



**Mode 6: Bb Aeolian (minor) Mode: 6th mode of Db Major**



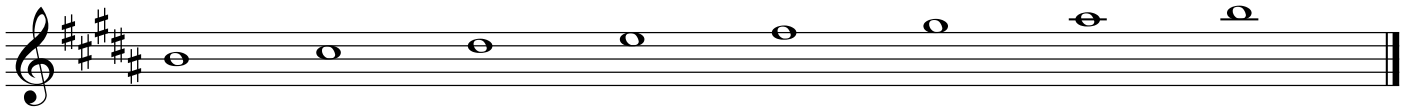
**Mode 7: A# Locrian (half-diminished) Mode: 7th mode of B Major**



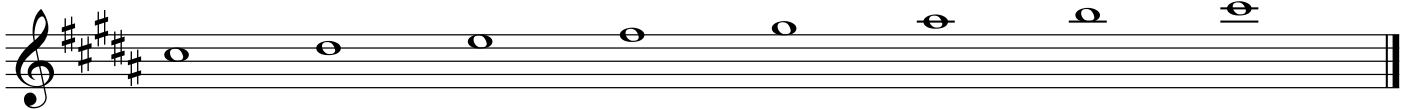
# The Seven Modes of B

Ian Percy

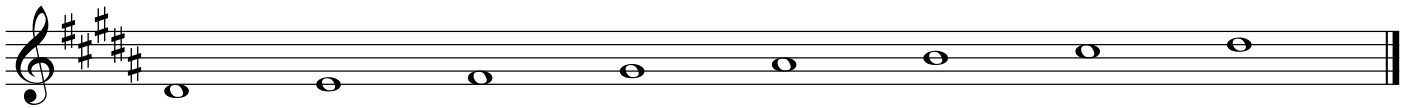
## Mode 1: B Major Scale (Ionian Mode):



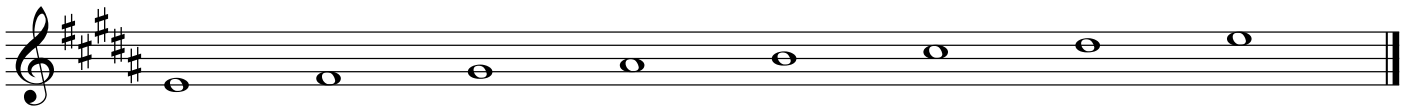
## Mode 2: C# Dorian (minor) Mode:



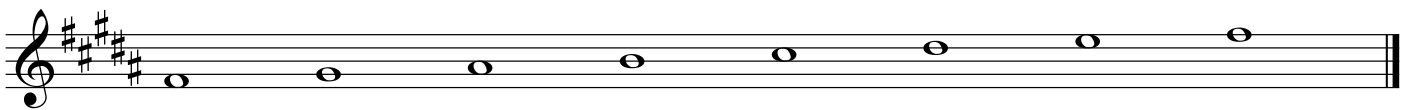
## Mode 3: D# Phrygian (minor) Mode:



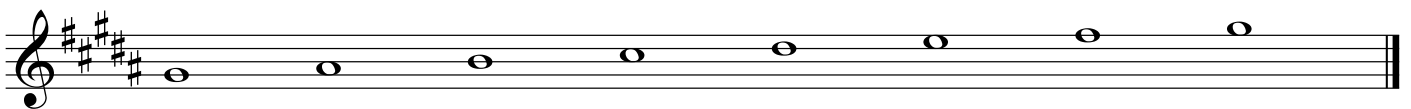
## Mode 4: E Lydian (Major) Mode:



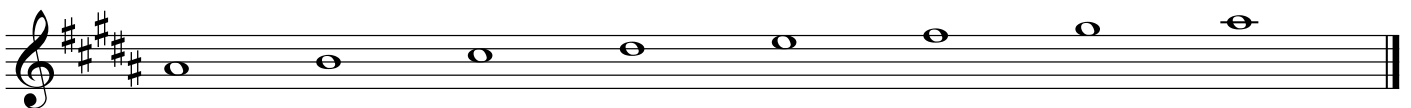
## Mode 5: F# Mixolydian (Major/Dominant) Mode:



## Mode 6: G# Aeolian (minor) Mode:



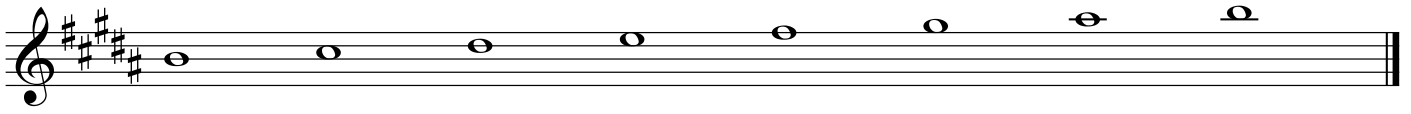
## Mode 7: A# Locrian (half-diminished) Mode:



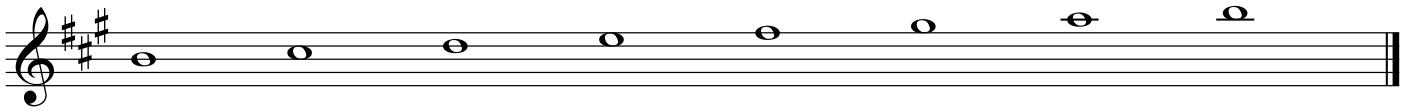
# The Seven Modes from B

Ian Percy

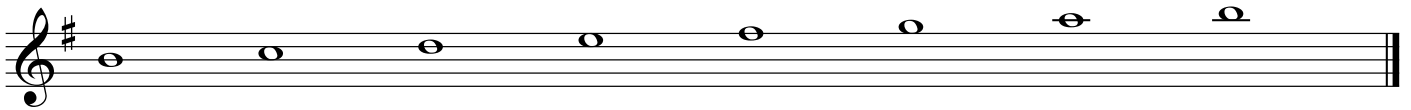
## Mode 1: B Major Scale (Ionian Mode):



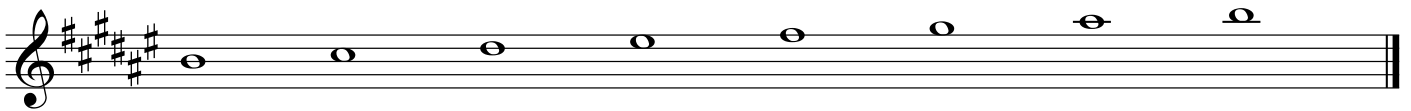
## Mode 2: B Dorian (minor) Mode: 2nd mode of A Major



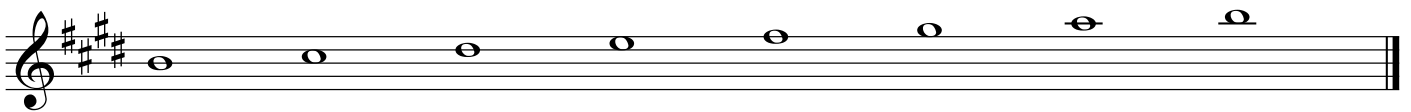
## Mode 3: B Phrygian (minor) Mode: 3rd mode of G Major



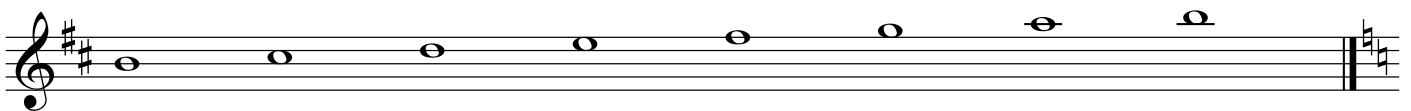
## Mode 4: B Lydian (Major) Mode: 4th mode of F# Major



## Mode 5: B Mixolydian (Major/Dominant) Mode: 5th mode of E Major



## Mode 6: B Aeolian (minor) Mode: 6th mode of D Major



## Mode 7: B Locrian (half-diminished) Mode: 7th mode of C Major

